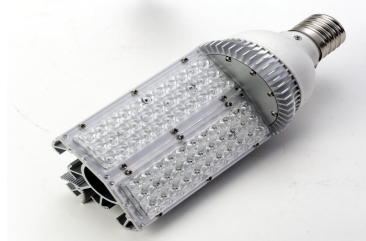




**LED LIGHT SPECIFICATION
30 WATT MOONRAKER**

**APPLICATIONS: INDOOR, OUTDOOR STREET, PARKING GARAGE
GAS STATION CANOPIES**



Light Color:	Day White (5800K) others avail.
LED Quantity:	30 Prichard (2 panels of 15)
Operating Voltage A/C:	120 - 277
Working Voltage D/C:	50
Normal Operating Temp:	< 140 degrees
Lamp Base	E40 (Mogul/Large - about 1.5")
Light Efficiency:	72.2 lm/w
LED Optical Power:	30 Watts
Total Power Consumption:	34 Watts (120V X 0.284 amps)
Power Factor:	98.9%
Luminous Flux:	2,435 LM
CRI:	70.3
LED Panel Angle:	200°
Lifetime of Lamp:	50,000 hours +
Typical Mounting Height:	Up to 25 feet
Warranty:	2 years from date of sale
Weight & Dimensions:	2.47 lbs / 4.5" X 10.75"

Installation:

For retrofit, bypass incoming fixture voltage (120 - 277 VOLTS A/C) directly to the lamp base. This should be done by qualified electrical professional. Base swivels to direct light angle once tightened in socket; do not over-tighten. No modifications allowed to bulbs as this could cause damage to heat-sink, loosen electronics, and void warranty. Existing fixture socket may need to be adjusted. It is approximately the same width as a 400 watt metal halide bulb. Do not look directly at light at close range - very bright. All Bravolight products are certified CE & RoHS.

