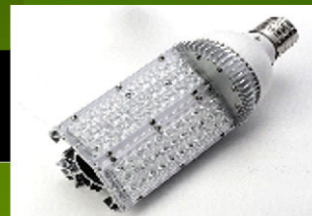


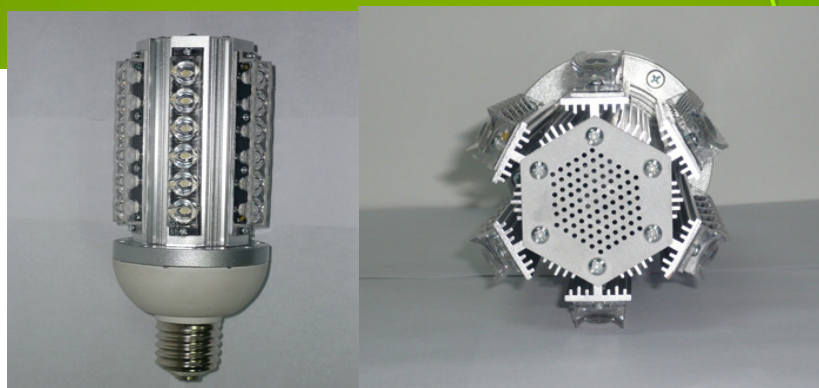
BRAVOLIGHT.com (813) 598-2076

NEW



LED LIGHT SPECIFICATION **36 WATT MOONRAKER POST**

APPLICATIONS: INDOOR, OUTDOOR POST OR VERTICAL MOUNTED APPLICATIONS



Light Color:	Day White (5800K) others avail.
LED Quantity:	36 Bridgelux (6 panels of 6)
Operating Voltage A/C:	120 - 277
Working Voltage D/C:	50
Normal Operating Temp:	115 front- 140 degrees heat-sink
Lamp Base	E40 (Mogul) and E27 (medium)
Light Efficiency:	72 lm/w
LED Optical Power:	36 Watts
Total Power Consumption:	36 Watts
Power Factor:	98.9%
Luminous Flux:	2,500 LM
CRI:	>80
LED Panel Angle:	360°
Lifetime of Lamp:	50,000 hours +
Typical Mounting Height:	Up to 20 feet
Warranty:	2 years from date of sale
Weight & Dimensions:	2.47 lbs / 4.5" X 10.75"

INSTALLATION:

FOR RETROFIT, BYPASS INCOMING FIXTURE VOLTAGE (120 277 VOLTS A/C) DIRECTLY TO THE LAMP BASE. THIS SHOULD BE DONE BY QUALIFIED ELECTRICAL PROFESSIONAL. NO MODIFICATIONS ALLOWED TO BULBS AS THIS COULD CAUSE DAMAGE TO HEAT-SINK, LOOSEN ELECTRONICS, AND VOID WARRANTY. EXISTING FIXTURE SOCKET MAY NEED TO BE ADJUSTED. IT IS APPROXIMATELY THE SAME WIDTH AS A 400 WATT METAL HALIDE BULB. DO NOT LOOK DIRECTLY AT LIGHT AT CLOSE RANGE VERY BRIGHT. ALL BRAVOLIGHT PRODUCTS ARE CERTIFIED CE & RoHS.



7/1/2010

BVO6-MOON-36W-W