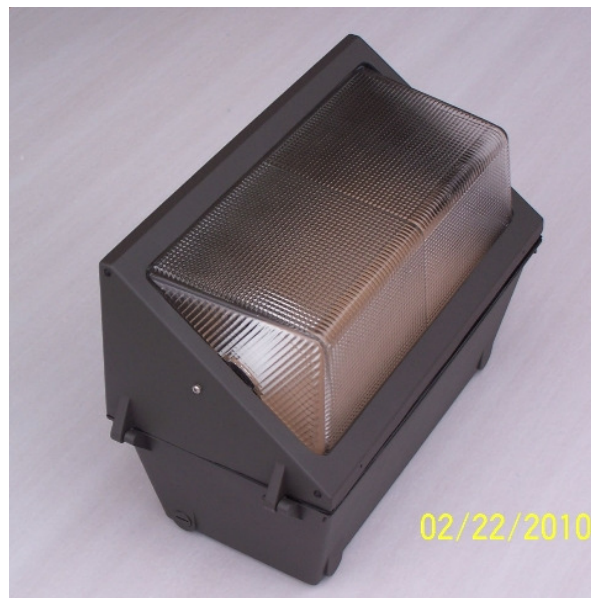


**LED FIXTURE SPECIFICATION  
"THE WALLPACK "**

**PERFECT FOR RETROFITTING THE MOONRAKER**

**APPLICATIONS: BUILDING, MARINA, STREET, PARKING, AREA LIGHTING**



<b>Housing:</b>	Die cast aluminum with hinged front frame, 1/2" plugs for photocell & conduit, bronze powder-coat finish over chromate conversion coating
<b>Reflector:</b>	Aluminum
<b>Lens Cover:</b>	Molded prismatic glass
<b>Socket:</b>	Mogul Base / E40
<b>Mounting Options:</b>	Cast in template for mounting over a 4" recessed mounting box or 1/2" conduit.
<b>Typical Replacement for:</b>	100 - 400 watt High & Low Pressure Sodium, Metal Halide, Pulse Start bulbs
<b>Listing &amp; Ratings:</b>	CSA: Wet Locations
<b>Dimensions:</b>	18.125" X 13" X 9" and 9.5 pounds
<b>OPTIONS:</b>	

**Installation Instructions:** Fixture should be mounted by a certified electrician or a professional electrical maintenance contractor with working knowledge of installing & maintaining this type of light. As with any electrical fixture, the power source should be off while installation is performed and follow all state and local electrical codes accordingly.